

DCT-4 Flasher Kit Instructions

Using a flasher kit is very different from using a normal data cable. You are advised to read the instructions through to familiarize yourself with the installation procedures before you actually start the installation.

1. Before trying to use the flasher kit you should copy the flash software and sample flash files from the CD to your hard drive. To do this, first insert the supplied CD into your CD or DVD drive. Then locate the "DCT4NEW" folder on the CD using Windows Explorer. Lastly, copy the "DCT4NEW" from the CD to your "C" drive.

Several flash applications and sample flash files will now be on your computer ready for use. It is recommended that you only use the "WinDCT4 2.0" flash application which can be found in the "Dct4sw" sub folder of the main "DCT4NEW" folder.

2. Now you need to prepare your phone so the service connector can be connected securely. You should remove the appropriate parts of your phone as detailed below:

3200/6610/7210/7250/7250i

Remove back cover, battery and sim card.

3510/3510i

Remove back cover, battery and sim card.

6510/8310

Remove back cover, battery, sim card and sim card holder.

6310/6310i

Remove battery and sim card.

8910/8910i

Remove back cover, battery, sim card and sim card holder.



3. Several of the connectors have foam padding to protect the connection pins during transit. You must remove the foam padding from the connector before use, otherwise you will not be able to insert the connector securely into the phone.



4. Now plug the connector into your phone, making sure the battery contacts on the connector connect with the battery contacts in your phone.

Power will be supplied to your phone through your computers USB port, so the phone's own battery is not required.

With the 63xx connector only, there is an additional connector cable coming out of the battery interface. You will need to connect this cable to the phone's external data interface.



5. Next, connect the connector cable into the adaptor plug.



6. Now, plug the dongle into a parallel printer port.



7. Then, plug the USB power cable into an operational USB port.



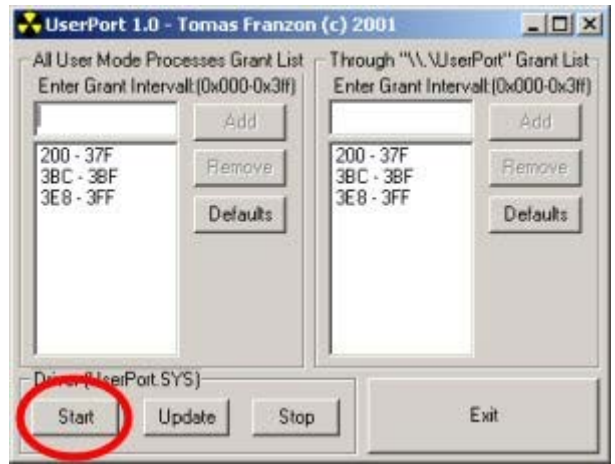
8. Lastly, connect the adaptor plug to the parallel port dongle.



9. The hardware is now connected. Next you will need to check that your computer's parallel port is configured correctly. A parallel port can operate in several modes. To use the flasher kit successfully you should configure your parallel port to operate in ECP mode. Read your computer's user manual for details of how to check this and make any required changes.

10. Windows NT / 2000 / XP Only

For the flasher software to operate correctly with these operating systems, an additional port access utility is required. This utility is called "UserPort" and can be found on the supplied CD or on the metatech download page. Install UserPort, restart your computer, run UserPort and click the "Start" button. Full installation instructions for UserPort can be found with the application itself.

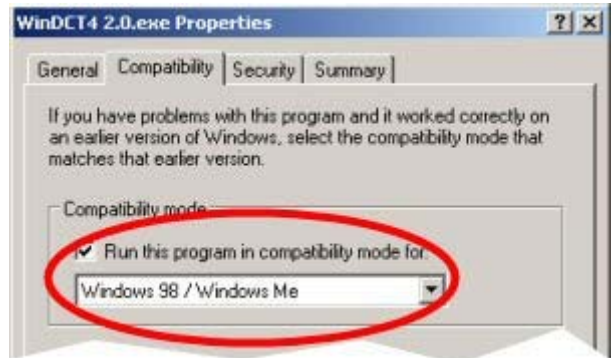


11. Windows XP Only

To ease the parallel port data transfer restrictions with Windows XP, you should also set the flasher software to run in "Windows 98/ME" compatibility mode.

Using Windows Explorer, browse to the "DCT4NEW" folder in your "C" drive, then locate the "WinDCT4 2.0" flash application which can be found in the "Dct4sw" sub folder.

Right click the "WinDCT4 2.0" application and select "Properties" from the menu. Then set the compatibility mode as shown opposite.



12. Before running the flash application you should also check that you do not have any continuously running applications that block access to your parallel printer port, such as printer status monitors. If so, exit these applications before continuing.

13. Using Windows Explorer, browse to the "DCT4NEW" folder in your "C" drive, then locate the "WinDCT4 2.0" flash application which can be found in the "Dct4sw" sub folder.



14. Double click the application file to start the flasher software.

If the instructions above have been followed correctly then the dongle information will be shown in the bottom left corner of the application.



15. To unlock/repair/reset the phone, first, turn the phone on as normal (an insert sim card message will be displayed - this is expected) and then click the "Unlock/Repair" button.

Although the phone has no battery, power will be supplied through the USB port cable so you can turn the phone on as normal.



16. The phone will be switched to Test Mode, and the application will display various data about the phone.

The locks will then be removed, the security code set to 12345 and other errors repaired.



17. When you are finished, remove the connector from the phone, and put the phone back together with the normal battery and sim card.

Note: Pictures are for reference purposes only. The procedure may differ depending on the model of phone. Always read the text description as well.