

USB Data Cable Connection Instructions (Type 3)

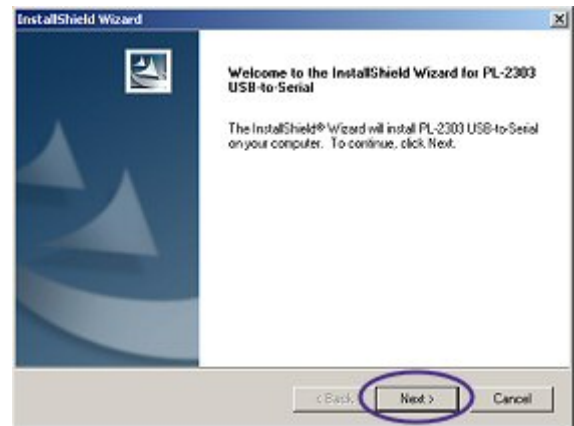
Connecting a USB data cable to your computer and phone is a very simple process, as it is simply a matter of installing the drivers and plugging in the cable at both ends. Any complexities involved through the use of a data cable will arise when you start to use software, not when connecting the cable.

1. Before trying to use the data cable you must install the USB cable drivers. You can download the USB data cable drivers using the link on the product information page on our website.

These drivers are required to allocate the cable a virtual com port such as COM 3, because mobile phones need to communicate with a computer through a serial connection and no software is available that supports a direct USB connection. More information on this can be found in the item description and the sales FAQs.

2. Extract the driver file to a folder on your computer, and run the file by opening it or double-clicking it.

When the driver installation screen is displayed, click the "Next" button to continue.



3. When the drivers have finished installing, restart your computer before trying to use the cable.



4. Remove the back cover, and the battery from your phone.



5. Remove all pieces of foam protection from the connection pins on the bottom of the cable connector, and (model dependent) from the battery holder on top of the cable connector.
6. Insert the battery on top of the connector and hold the battery and connector together (example pictured opposite).

The two battery holders on the connector will help keep the battery in position (model dependent).

7. Continue to hold the battery and connector together and then align them with the battery contacts at the top of your phone's battery compartment.

While resting the battery and connector against the battery contacts, allow the battery and connector to pivot down into the battery compartment of your phone.



8. The connector should now be resting in the battery compartment but (model dependant) may not have clicked in place, and hence will be sitting loose. If so, read section 9, but if the connection is secure jump to section 10.



9. If the connector has not locked into place, then it will be because the connector has a physical lock you need to use to secure the connector.

For example, with the **Nokia 35xx** series, locate the black plastic clip at the back of the connector near where the cable enters the connector. Push the plastic clip into the connector and then gently push the top of the battery and connector down into position, take care not to use excessive force which may result in damage to the pins at the bottom of the connector. Release the plastic clip to secure the connector in position. The ends of the clip should slide under the metal protection cover at the base of the phone to hold the connector securely in place.

With the **Nokia 6610 and 72xx** series it is simply a case of making sure the long black plastic lock clips over the end of your phone. With the **Nokia 5100 and 6800** there are lock levers on the connector, you should hold them in, push the connector right down into the phone and then release the lever to lock the connector. With the Nokia 5100 there is only one lever but then a dedicated lock switch to use when the connector is in position and the lever has been released.

Other connectors will lock in place simply by exerting light downward force.

10. Turn the mobile phone on as normal.
11. Locate the USB port on the back of your computer and, with the computer turned on, insert the USB data cable.



12. Run the required software. Suitable software is recommended in the product information page on our web site.
13. Check all the software settings are correct, and read our software tips and trouble-shooting sheet if your software is causing you problems.

Note: Pictures are for reference purposes only. The procedure may differ depending on the model of phone. Always read the text description as well.

