

USB Data Cable Connection Instructions (Type 1)

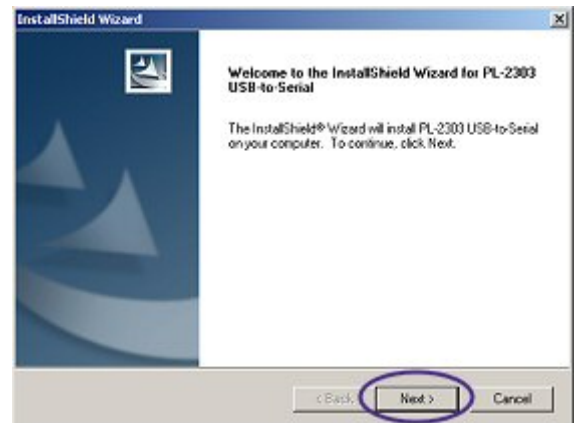
Connecting a USB data cable to your computer and phone is a very simple process, as it is simply a matter of installing the drivers and plugging in the cable at both ends. Any complexities involved through the use of a data cable will arise when you start to use software, not when connecting the cable.

1. Before trying to use the data cable you must install the USB cable drivers. You can download the USB data cable drivers using the link on the product information page on our website.

These drivers are required to allocate the cable a virtual com port such as COM 3, because mobile phones need to communicate with a computer through a serial connection and no software is available that supports a direct USB connection. More information on this can be found in the item description and the sales FAQs.

2. Extract the driver file to a folder on your computer, and run the file by opening it or double-clicking it.

When the driver installation screen is displayed, click the "Next" button to continue.



3. When the drivers have finished installing, restart your computer before trying to use the cable.



4. Locate the data connector on the bottom of your phone.
5. Plug the connector into the phone, making sure that it is in the right position and has clicked into place. If the connector falls out then you have not inserted the connector correctly. Make sure that it locks into position.



6. Turn the mobile phone on as normal.

7. Locate the USB port on the back of your computer and, with the computer turned on, insert the USB data cable.



8. Run the required software. Suitable software is recommended in the product information page on our web site.
9. Check all the software settings are correct, and read our software tips and trouble-shooting sheet if your software is causing you problems.

Note: Pictures are for reference purposes only. The procedure may differ depending on the model of phone. Always read the text description as well.